

Coastal Resiliency Plan

TOWNS OF WESTBROOK, CLINTON, OLD SAYBROOK, AND BOROUGH OF FENWICK

Public Workshop #1

September 13, 2023

Meeting Overview

- 01 Project Purpose
- 02 Roles + Responsibilities
- 03 Scope + Schedule
- 04 Public Engagement
- 05 What We've Learned So Far
- 06 Next Steps
- 07 Activity



01

Project Purpose

PURPOSE

Why Create a Coastal Resiliency Plan?

To provide the Towns of Clinton, Westbrook, Old Saybrook, and the Borough of Fenwick with a comprehensive understanding of future risks associated with sea level rise and to collaboratively develop a shared vision for strategies and projects that will reduce risk and build community resilience

Project funding provided by a grant from the National Fish and Wildlife Foundation's Long Island Sound Futures Fund



PURPOSE

Building on a Strong Foundation

We are not starting from scratch.

Several related plans have already been completed or are currently underway in each municipality:

- Clinton Coastal Community Resilience Report (2022)
- Westbrook Hazard Mitigation Plan (2019)
- Old Saybrook & Fenwick Local Natural Hazards Mitigation Plan Update (2019)
- Old Saybrook Coastal Resilience and Adaptation Study (2018)



PURPOSE

Building on Local Knowledge

Municipal staff

Local coastal resiliency committees/task forces

Beach associations

The community



WHAT IS RESILIENCE?

Resilience is...

The capacity of a social-ecological system to absorb or withstand disturbances and other stressors and still maintain its basic structure and function.

(Holling 1973; Gunderson & Holling 2002; Walker et al. 2004)



WHAT IS RESILIENCE?

Three Interrelated Strategies to Address Climate Change

RESILIENCE

preparing for and improving the County's ability to recover/bounce back from climatic events

ADAPTATION

implementing changes to ensure we can live with and adapt to the impacts of climate change (e.g., building elevation)

MITIGATION

tackles the cause of climate change by reducing greenhouse gas emissions (e.g., renewable energy)



WHAT IS RESILIENCE?

Resilience of What and to What?

Resilience of communities
to climate stressors

- Sea level rise
- Coastal erosion
- Extreme precipitation & flooding
- Storm surges & high winds
- Extreme heat
- Warmer winters



WHAT IS RESILIENCE?

Benefits of Resilience

- Protect homes, businesses, & community infrastructure
- Protect Long Island Sound & its plant, animal, and marine life
- Protect beaches, wetlands, & coastal attractions
- Proactively prepare for future natural disturbances so our communities can quickly respond & recover
- Build local capacity to adapt & learn from past disturbances
- Sustain a high quality of life for all residents**

qualities of a **RESILIENT WORLD**

Diversity
Ecological variability
Modularity
Social capital
Innovation
Redundancy
Ecosystem services

Walker & Salt (2006)

RESILIENCE ACROSS SCALES

Impacts Across Socio-Political Scales

United States



Connecticut



Regional



Municipalities



Landowners



SLOWER MOVING VARIABLES
(laws, regulations)

FOCAL SCALE

FASTER MOVING VARIABLES
(land use + land management)

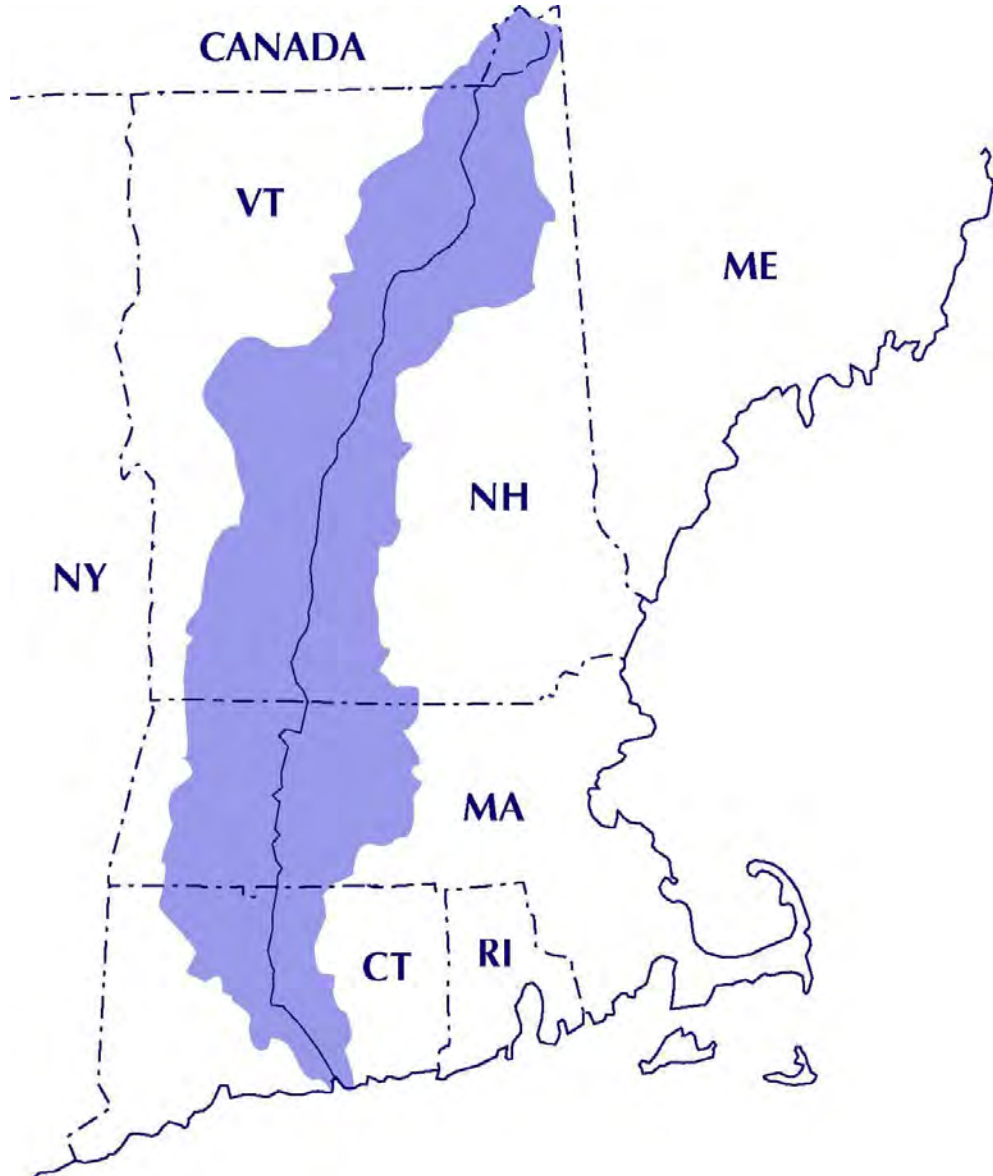
Impacts Across Ecological Scales



Subregional watershed basins

RESILIENCE ACROSS SCALES

Impacts Across Ecological Scales



INTERCONNECTED SYSTEMS

RESIDENTS

ECONOMICS

HEALTH & SOCIAL

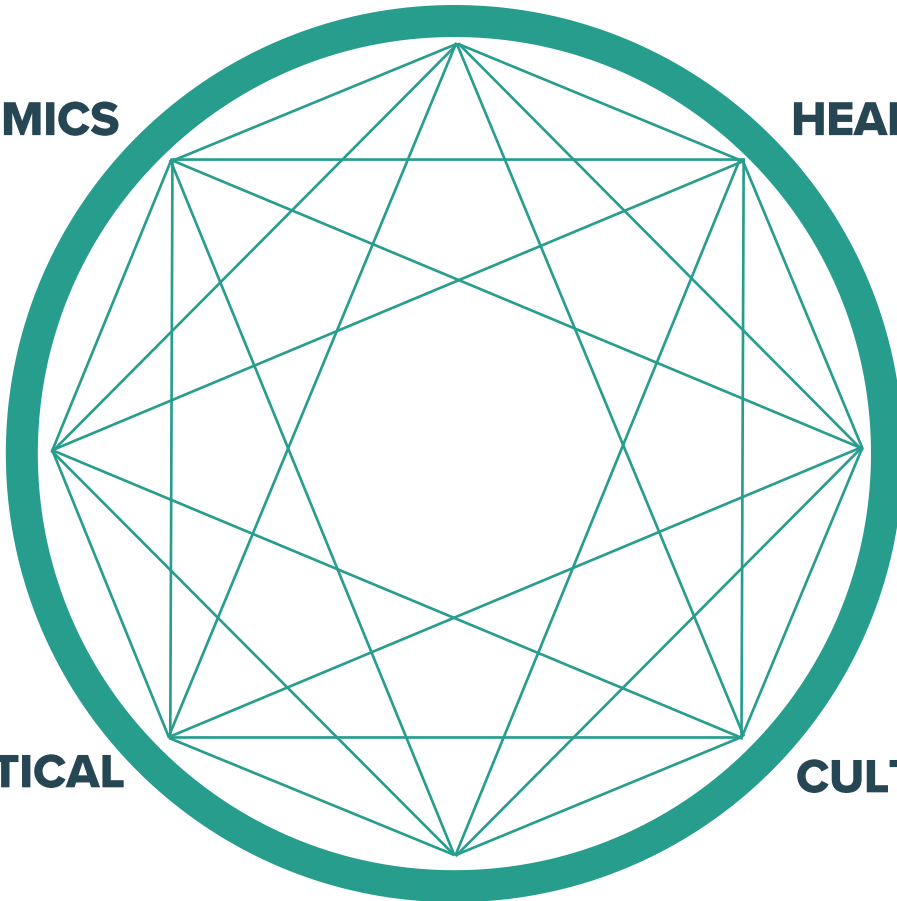
HOUSING

NATURAL

POLITICAL

CULTURAL

INFRASTRUCTURE





02

Roles + Responsibilities

ROLES + RESPONSIBILITES

**Executive
Committee**

**Stakeholders
+ Public**

**Consultant
Team**

Executive Committee

Oversee and guide the planning process

- Representatives from each municipality
- Meet regularly throughout the project
- Review all draft deliverables
- Provide direction and assistance with public outreach

TOWN OF CLINTON

Abby Piersall, APiersall@clintonct.org

Carrie Allen, Carriefallen@gmail.com

TOWN OF WESTBROOK

Peter Gillespie, PGillespie@westbrookct.us

Tony Cozza, Tonycozza@comcast.net

Suzanne Helchowski, SHelchowski@westbrookct.us

TOWN OF OLD SAYBROOK

Chris Costa, Chris.Costa@Oldsaybrookct.gov

Doug Mccracken, mccradsol@gmail.com

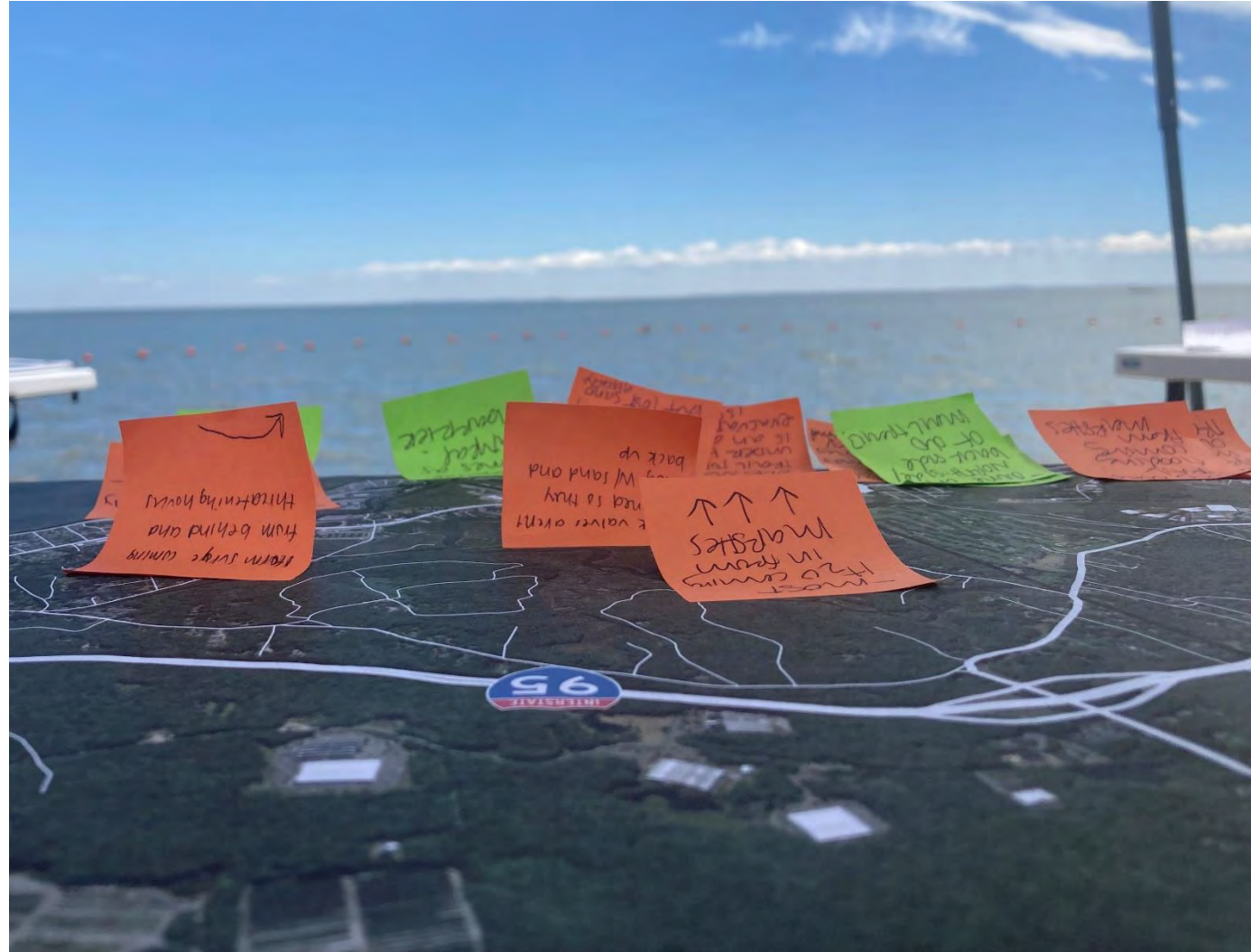
BOROUGH OF FENWICK

Marilyn Ozols, ZEO@fenwicknews.com

Bruce Baird, bbaird263@gmail.com

Local Experts

- Contribute to and vet community asset mapping
- Provide feedback on issues and opportunities
- Assist with project identification and prioritization
- Provide input on draft Coastal Resiliency Plan





Technical Project Leads

- Interdisciplinary firms with regional experience developing coastal resiliency plans and implementing resilience projects
- Hydrodynamic modeling
- Vulnerability assessment and project development
- Develop Coastal Resiliency Plan



An aerial photograph of a coastal area. On the left, there is a green golf course with several houses. A road runs through the middle. On the right, there is a large body of water with a small inlet and a stone pier. The sky is blue and the water is a deep blue.

03

Developing the Coastal Resiliency Plan: Project Scope and Schedule

Project Scope

identify
**Community
Assets**

collaboratively
w/ municipalities
and the public



develop
**Sea Level Rise
Scenarios**

using
hydrodynamic
modeling



conduct a
**Risk
Assessment**

to identify
vulnerable assets
and systems



identify
**Projects and
Strategies**

to increase the
region's coastal
resilience



1. IDENTIFYING ASSETS

Resources that Sustain a Community

Organized based on the Core Recovery Functions of the FEMA Recovery Framework



Housing



**Infrastructure
Systems**



**Health and
Social Services**



**Natural and
Cultural Resources**

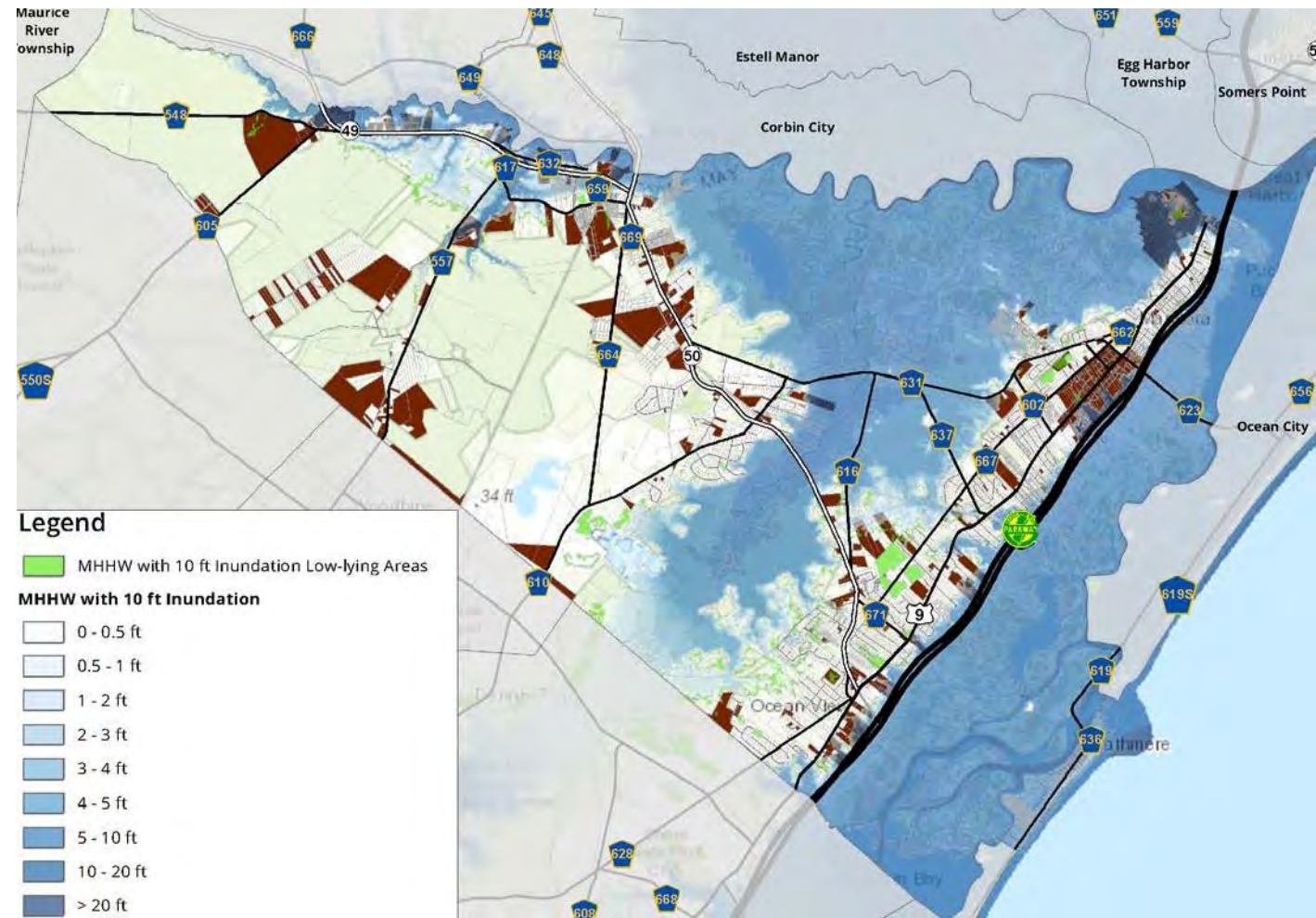


**Economic
Systems**

2. MODELING SEA LEVEL RISE

Anticipating Future Flood Hazards

- Hydrodynamic modeling to develop custom sea level rise scenarios
- Parameters of the scenarios to be developed in coordination with the Executive Committee
- Modeling to be ground-truthed with public input / local knowledge
- Lays the foundation for the vulnerability and risk assessment



3. VULNERABILITY ASSESSMENT

Assessing Risk to Assets

- Sea level rise scenarios overlaid with community assets
- Risk determined based on value of the asset and likelihood and severity of flooding
- Will result in the identification of short- and long-term projects to reduce risk



4. PROJECT IDENTIFICATION

Projects to Increase Resilience

- Collaborative process with the Executive Committee and community
- Grounded in best practices, science, and community needs
- Will identify several different types of projects, from regional projects to planning and policy-related initiatives



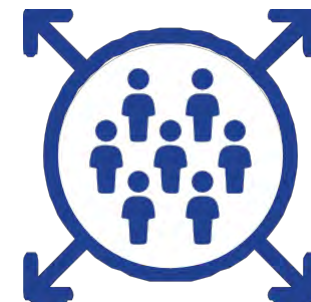
Planning
(e.g., POCDs)



**Land Use
Regulations**



**Capital
Projects**



**Capacity
Building**

4. PROJECT IDENTIFICATION

Projects to Increase Resilience



4. PROJECT PRIORITIZATION + ACTION PLAN

Action plan for implementing projects and recommendations to include:

- Lead entity
- Key partners
- Cost estimate
- Timeframe
- Immediate next steps
- Funding sources



4. PROJECT DEVELOPMENT

Conceptual development of high priority projects

- 3 to 4 projects per municipality
- 2 regional projects



5. COASTAL RESILIENCY PLAN

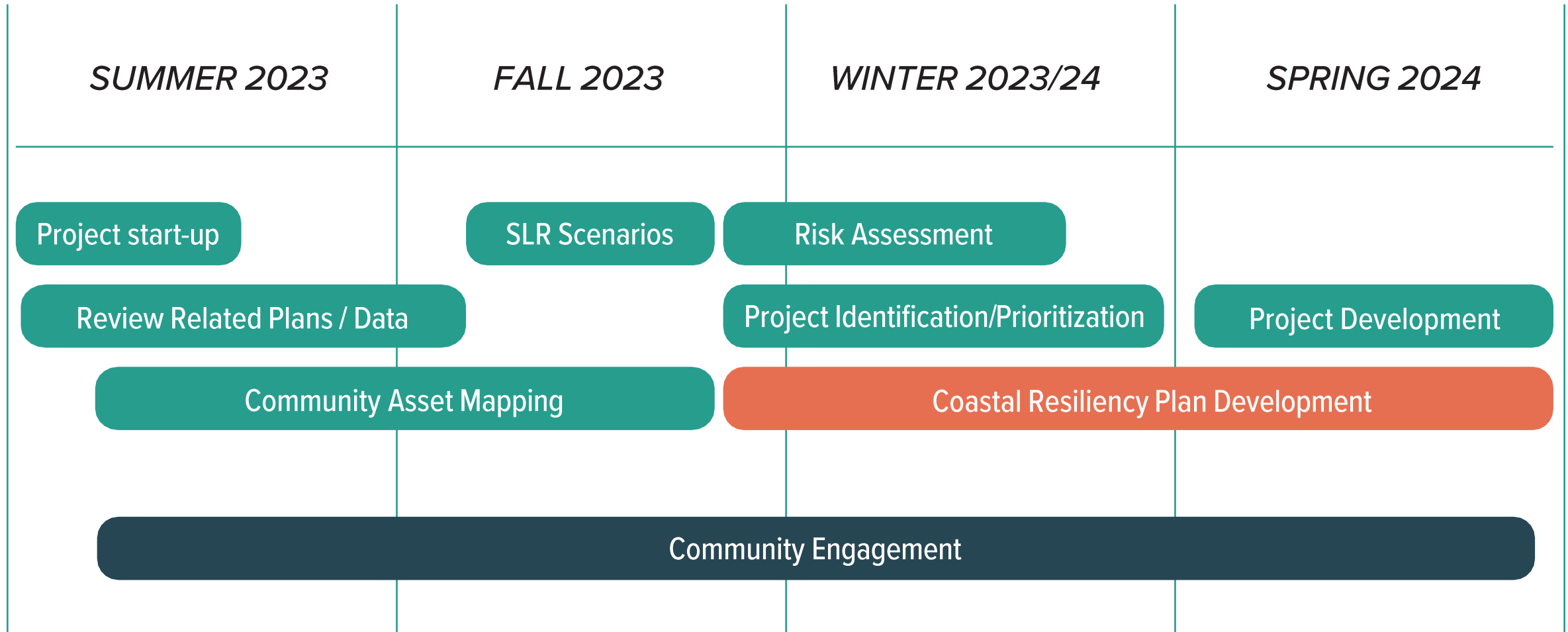
- Draft Plan in May 2024

- Final Plan by end of June 2024



PROCESS

Project Schedule





04

Public Engagement

Public Engagement

- Developing a community-based plan is a priority of the planning process
- Public engagement will occur throughout the entire planning process

**Project
Website**

**Executive
Committee**

**Community
Workshops**

**Stakeholder
Meetings**

**Pop-Up
Events**

**Online
Mapping
Tools**

OUTREACH

Public Engagement



[Home](#) [About](#) [Get Involved](#) [Resilience Library](#) [Projects](#)

Four Shore Coastal Resiliency

The four coastal communities of Clinton, Westbrook, Old Saybrook, and Fenwick are working together to develop a regional Coastal Resiliency Plan. This Plan will result in a comprehensive understanding of risks associated with sea level rise, a shared vision for the future, and the identification of strategies and projects to reduce risk and build community resilience.

To learn more about the development of the Coastal Resilience Plan, including the project schedule, please visit the [About](#) page. Visit the [Get Involved](#) page to map community assets, issues, and opportunities on the [Interactive Map](#) and also share how flooding and erosion have impacted you.



Project
Website

Executive
Committee

Community
Workshops

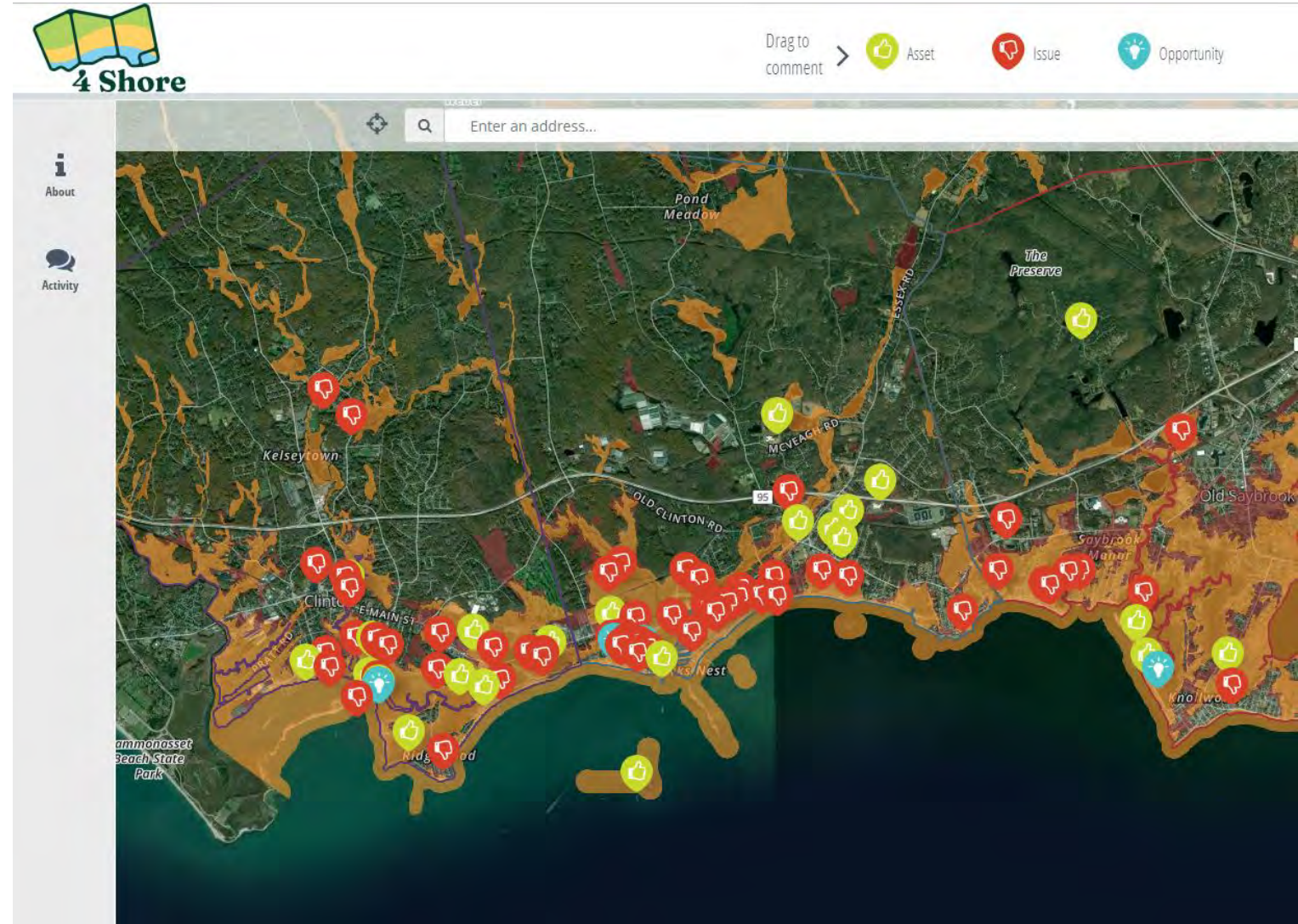
Stakeholder
Meetings

Pop-Up
Events

Online
Mapping
Tools

Several ways to access information and provide input:

- Read about the project
- Access related resiliency resources
- Learn about upcoming public events
- Submit comments to the project team 24/7
- “Subscribe” to the project website
- Add assets, issues, and opportunities to an **interactive map**



OUTREACH

Public Engagement



Project Website

Executive Committee

Community Workshops

Stakeholder Meetings

Pop-Up Events

Online Mapping Tools

OUTREACH

Community Workshops

SUMMER/FALL 2023

1

Intro to the resiliency plan +
community asset mapping

2

WINTER 2023 / 2024

3

Risk assessment review +
project identification/prioritization

4

SPRING 2024

5

Presentation of draft
resiliency plan

OUTREACH

Upcoming Community Workshops

Content at these two meetings will be identical. Multiple options are being provided to expand access.

VIRTUAL MEETING

Tuesday September 26, 2023

from 6:30PM - 8PM

see project website for Zoom Link

This presentation will be recorded and added to the project website.

IN-PERSON WORKSHOP

Tuesday October 10, 2023

from 6:30PM - 8PM

in the Old Saybrook Middle School Auditorium

OUTREACH

Public Engagement



**Project
Website**

**Executive
Committee**

**Community
Workshops**

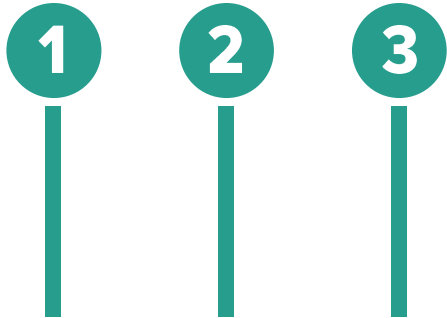
**Stakeholder
Meetings**

**Pop-Up
Events**

**Online
Mapping
Tools**

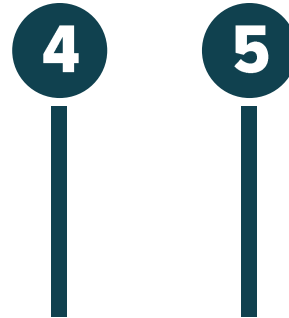
Pop-Up Events

SUMMER/FALL 2023



Intro to the resiliency plan +
community asset mapping

WINTER 2023 / 2024



Risk assessment review +
project identification/prioritization

SPRING 2024



Presentation of draft
resiliency plan

OUTREACH

Upcoming Pop-Up Event

Saturday September 30, 2023

from 12PM - 4PM

@ the Arts + Crafts Festival in Old Saybrook



OUTREACH

Public Engagement



**Project
Website**

**Executive
Committee**

**Community
Workshops**

**Stakeholder
Meetings**

**Pop-Up
Events**

**Online
Mapping
Tools**

OUTREACH

Stakeholders

Learning from local experts and building on local knowledge

Meetings throughout the project

Format tailored to stakeholders

virtual, in-person, small group, site visits, walking tours

Meeting invitations coordinated with Executive Committee





05

What We've Learned So Far

Public Events + Stakeholder Outreach

Public Input Received to Date:

- Pop-up event at Westbrook Town Beach
- Pop-up event at Clinton Summerfest
- Driving tour of study area with Executive Committee
- Comments submitted via website and interactive map



ASSETS

What We're Hearing

Assets

- Historic districts / homes (e.g., Waterside Lane)
- Public docks, marinas, and beaches (e.g., Saybrook Point, Clinton Town Dock)
- Emergency services (fire, EMS, police)
- Schools
- Recreational facilities (parks, golf course)
- Beach communities
- Urban forest
- Marine habitats
- Salt marshes, wetlands, and rivers



What We're Hearing

Issues

- Damaged seawalls and other structures
- Beach erosion
- Roadways prone to flooding (e.g., railroad underpasses, coastal roads)
- Critical facilities at flood risk (e.g., fire departments)
- High tide flooding
- Stormwater runoff
- Septic system failure and impacts to water quality, public health, and ecological health



What We're Hearing

Issue Areas

- Lobster Landing
- Shore Road and Groveway
- Clinton Town Beach
- Old Mail Trail
- Pilots Point Neighborhood
- Tarpon, Dolphin, and Striper Avenues
- Chalker Beach
- Cold Spring Marsh
- Stormwater run-off from US Rte 1
- Sequassen Ave





06

Next Steps

NEXT STEPS

Resiliency Plan Development

- Asset inventory development
- Setting the parameters for the hydrodynamic modeling
- Stakeholder meetings
- Continued public outreach



Public Engagement

COMMUNITY WORKSHOPS

Tuesday September 26, 2023

from 6:30PM - 8PM; see project
website for Zoom Link

Tuesday October 10, 2023

from 6:30PM - 8PM @ the Old Saybrook
Middle School Auditorium

POP-UP EVENT

Saturday September 30, 2023

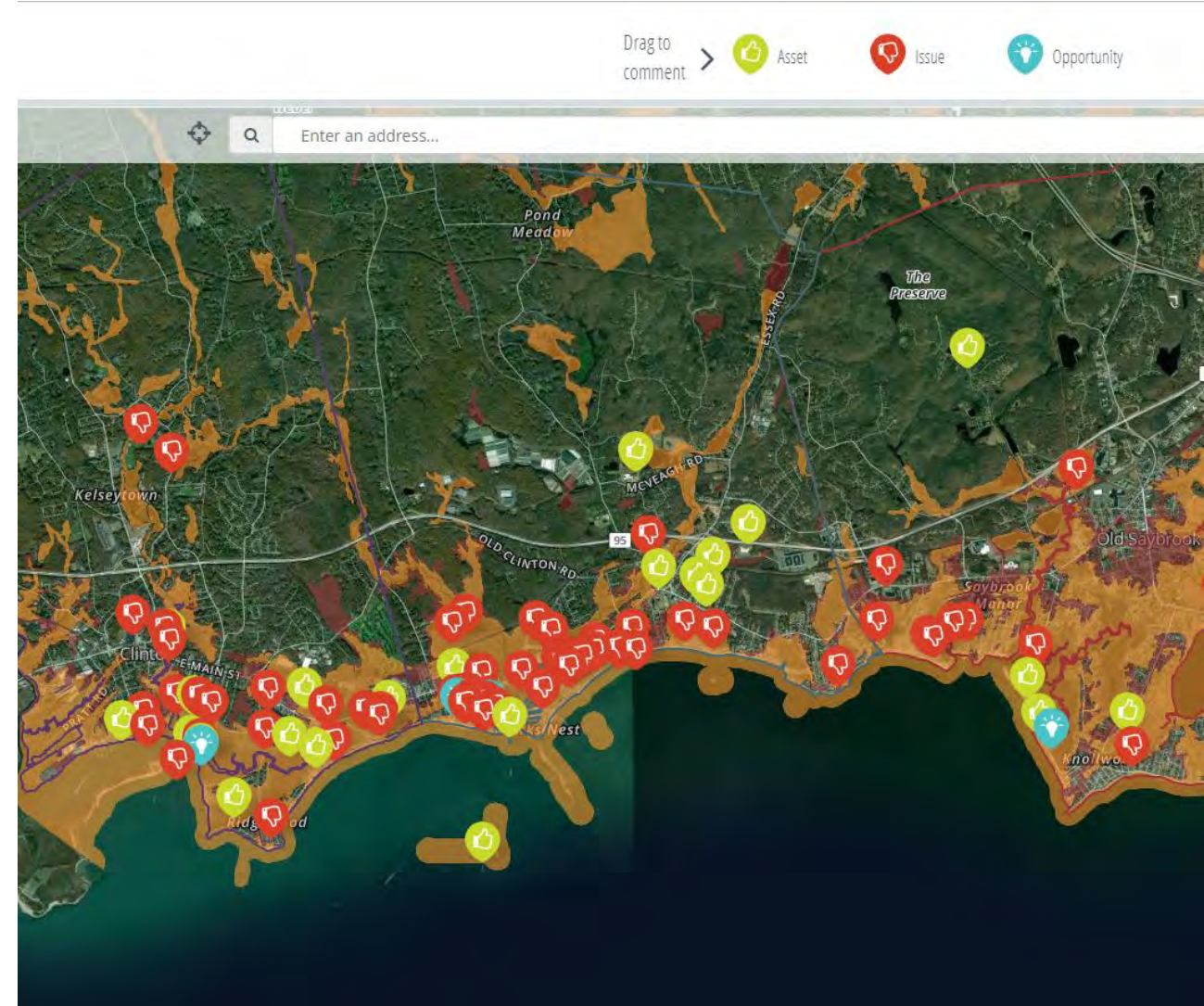
from 12PM - 4PM @ the Arts + Crafts
Festival in Old Saybrook

NEXT STEPS

Don't Forget to Visit the Website!

www.4ShoreResiliency.com

Please visit the project website to add your insights and ideas to the interactive map!





07

Activity



Thank You!

www.4ShoreResiliency.com

